

## Climate over Sri Lanka during 2014

*Prepared by the staff of FECT, January 2015*

### **Summary**

#### **Satellite Derived Monthly Rainfall**

Sri Lanka was faced a dry condition all over the island during the period January to April. In May rainfall was observed in North Central and Eastern region of the island. During June rainfall was observed specifically in the South West region. In July a dry condition was maintained in the country. From August to December rainfall was significantly increased for the most parts of the country.

#### **Quarterly Rainfall Anomaly**

First two quarters have shown below normal condition almost for the entire Sri Lanka while next quarter (JOS) has shown above average for the most part of the country. The fourth quarter (OND) has shown extremely wet condition all over the country.

#### **Inside this issue**

1. Climate Summary in 2014
  - a. Satellite Derived Rain fall Estimates
  - b. Monthly Anomalies of Rainfall during 2014
  - c. Climate Indices

## 1. Climate summary in 2014

### a) Satellite Derived Rainfall Estimates

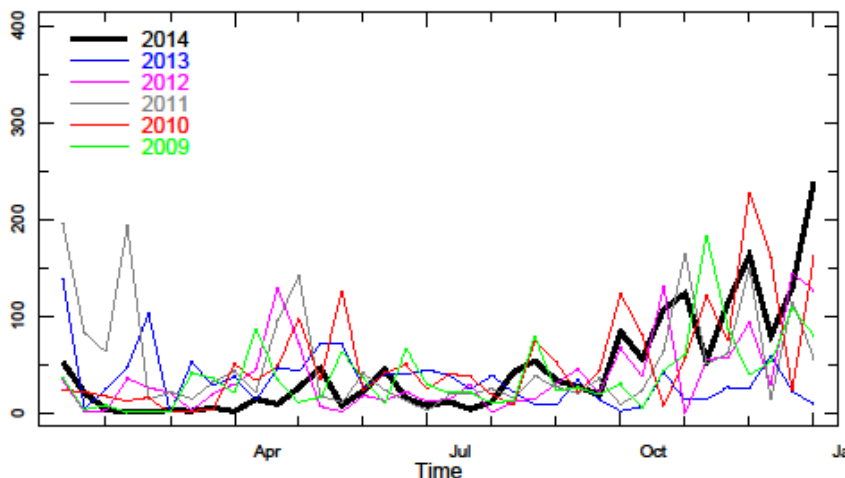


Figure 1: The average rainfall every decadal (approximately 10-days) over Sri Lanka during 2014 (Black line) is compared with the average rainfall for past five years from 2009 to 2013. It can be noted that from January to April the country was faced dry condition compared to previous years. Also in months of June and July the country was received less averaged rainfall compared to the past five years. The rain fall was gradually increased at the end of the months of the year and the highest average rain fall for the past five years was seen during December 2014.

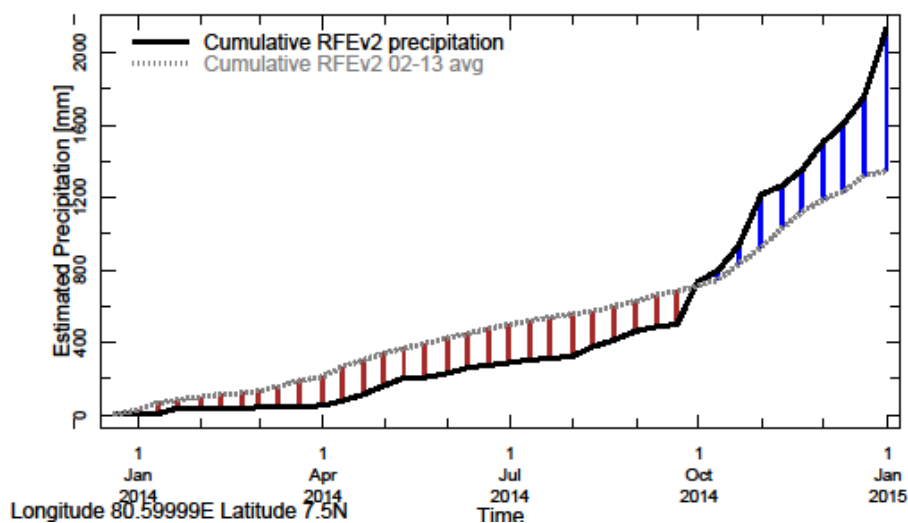
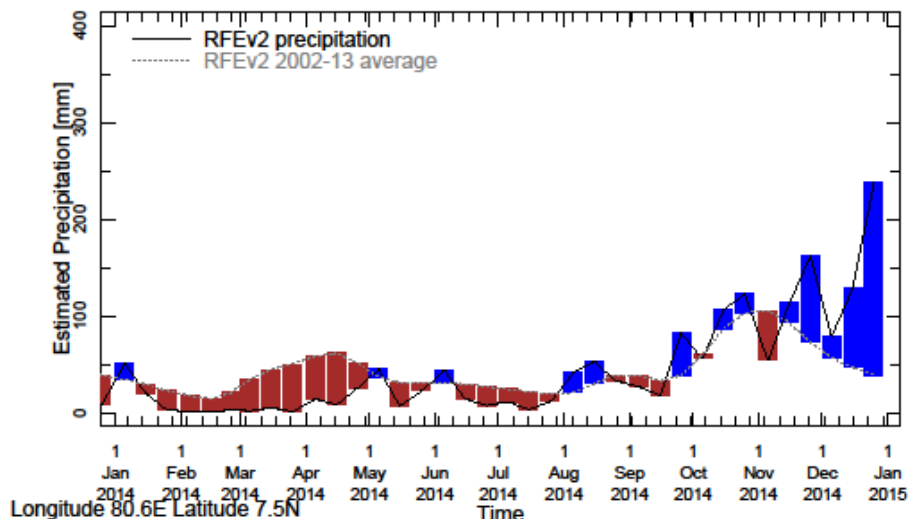
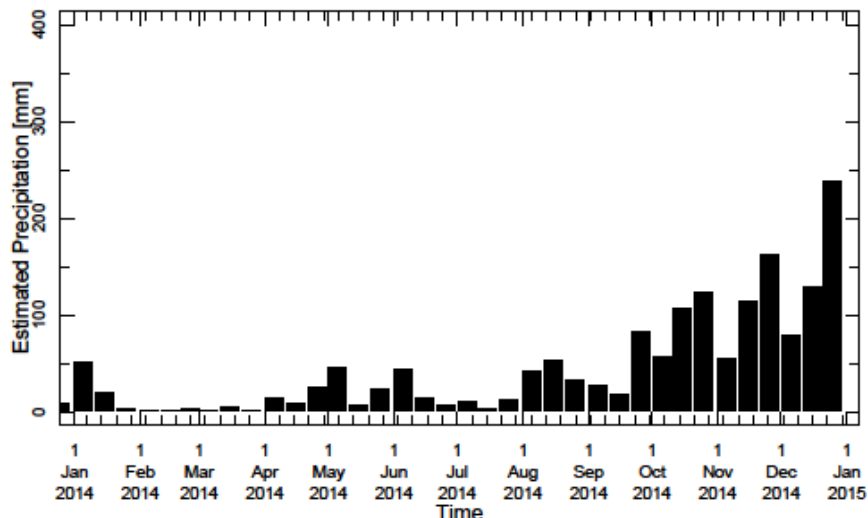


Figure 2: The cumulative rainfall over Sri Lanka starting in January 2014 until December 2014 in comparison with average rain fall of the previous 6 years.

This graph shows that from January to October the total rainfall was below the cumulative average rain fall for previous 6 years. And during October to December total rain fall was increased sharply and it was above the cumulative average rain fall for the past 6 years. RFE is an area averaged Rain Fall Estimate from satellite and ground base sources.

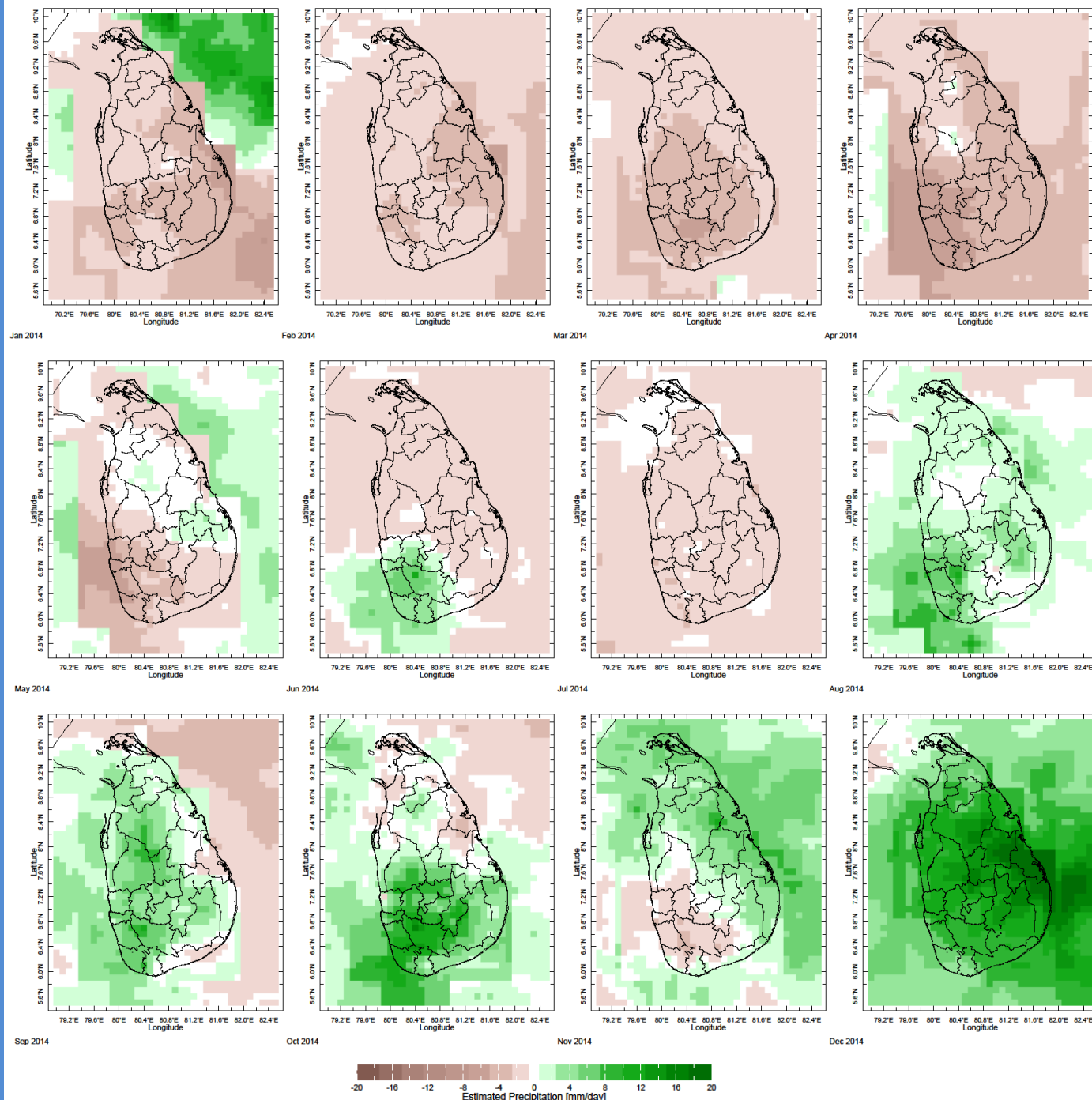


**Figure 3:** Rainfall for the past 5 years with above-average (compared to the last 8 years) hatched in blue and below normal in brown.



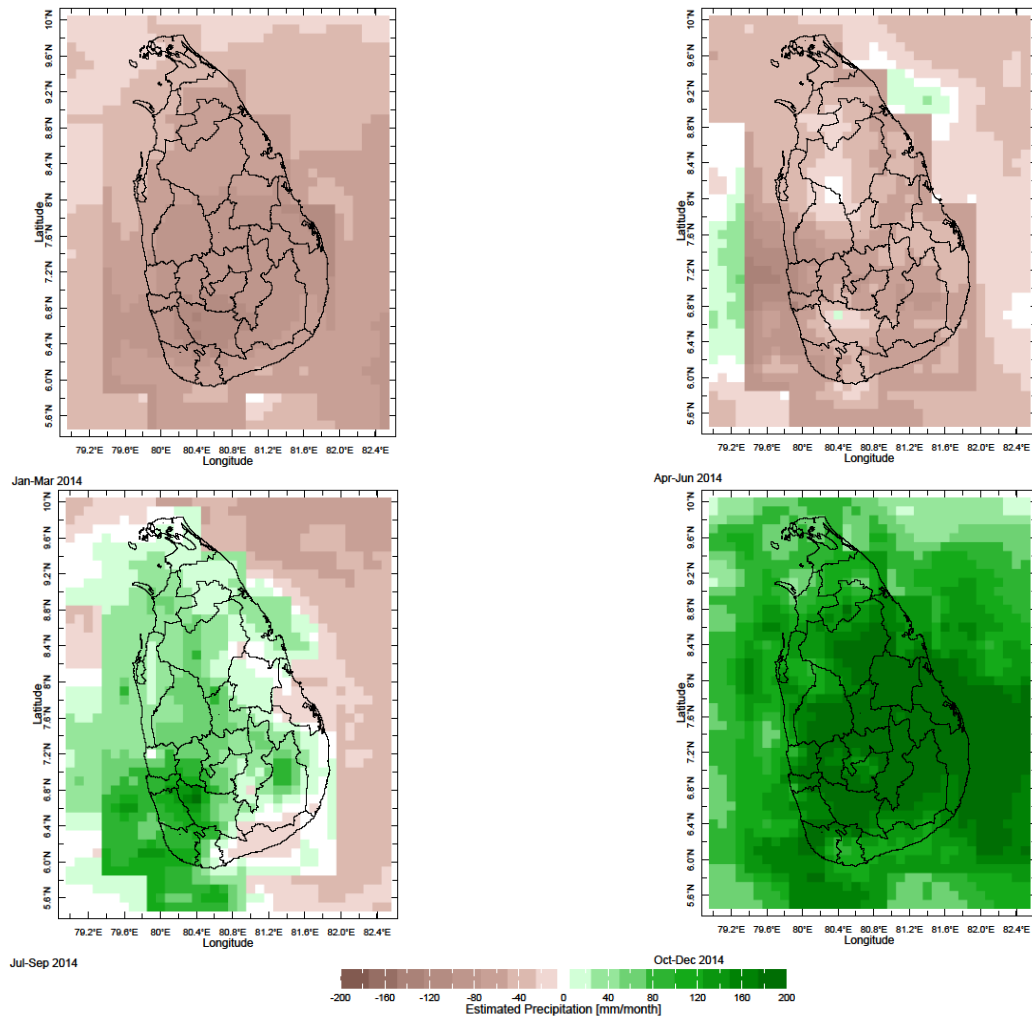
**Figure 4:** Monthly estimated precipitation in 2014

## b) Monthly Anomalies of Rainfall during 2014



Anomalies of Rainfall from the Average over the previous 10 years from January to December of 2014. Data obtained from NOAA CPC via IRI. Previous work at FECT has shown correspondence between ground observations and satellite estimates.

## C) *Quarterly Rainfall Anomaly in 2014*



**Figure 6:** Seasonal Precipitation Anomaly in 2014 over Sri Lanka, Data obtained from NOAA CPC.